

wheel loader



appsheet

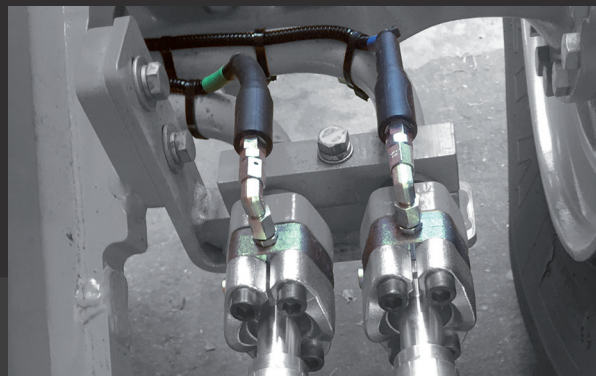


**WEIGHING AND LOADING DATA
MANAGEMENT DEVICE
INSTALLED ON BOARD**

The Device is perfectly positioned in the cabin to give you the best view of its display and operability in choosing the data you want to enter before starting the load. Its swivel mount allows you to direct the Device as you wish.

LOAD SENSORS TO DETERMINE THE LIFTING PRESSURE

The load sensors are inserted, by means of special fittings, into the hydraulic pipes that carry the oil to the lifting cylinders in order to measure the pressures involved during the variation of loads and movement.



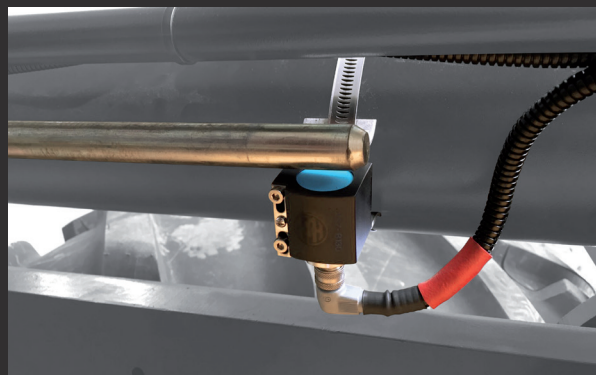
SENSOR FOR WEIGHT DISPLAY

This sensor installed on the machine allows the display of the weight when the arm enters its intervention area during lifting.



TOOL CLOSED CONFIRMATION SENSOR

Controlling that the tool is always closed during weighing ensures that any human errors during loading are eliminated.



INCLINATION SENSOR

The tilt sensor in its small dimensions allows the instrument not to display the weight when the machine exceeds the preset inclination.



specifications

	M	S	X
power supply	9÷36Vdc	9÷36Vdc	9÷36Vdc
working temperature	-40÷+80°C	-40÷+80°C	-40÷+80°C
shocks	40G	40G	40G
device/sensors protection	IP54/IP67	IP54/IP67	IP54/IP67
size	140x204x67	140x204x67	140x204x67
display	HD color	HD color	HD color
maximum capacity (kg)	6000		
measurement error	1%	1%	1%
legal for trade		yes	yes

data management

	M	S	X
production monitoring (products)	20	30	300
recipes/blending management	5	5	150
multi-tasking (simultaneous loads)	5	10	25
loadout full data management		very small	large
job orders reception			yes
cloud connection	USB	USB-wireless	USB-wireless
loading file download (.csv)	yes	yes	yes