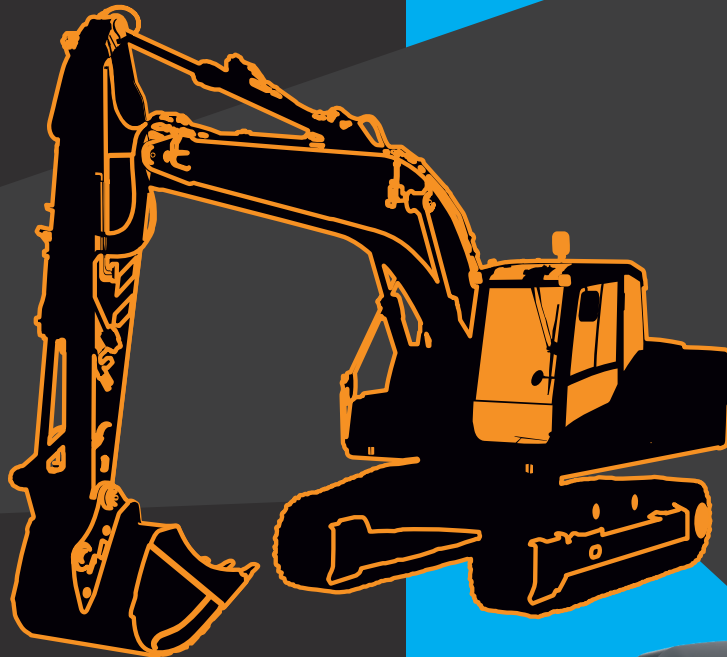


excavator



appsheet



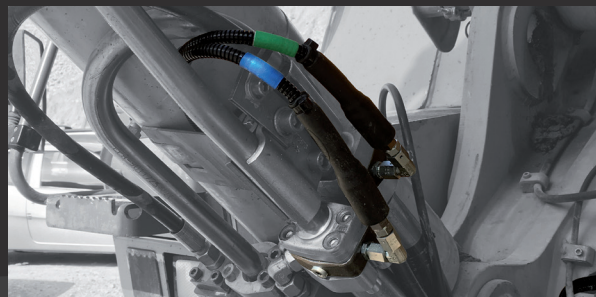
WEIGHING AND LOADING DATA MANAGEMENT DEVICE INSTALLED ON BOARD

The Device is perfectly positioned in the cabin to give you the best view of its display and operability in choosing the data you want to enter before starting the load. Its swivel mount allows you to direct the Device as you wish.



LOAD SENSORS TO DETERMINE THE LIFTING PRESSURE

The load sensors are inserted, by means of special fittings, into the hydraulic pipes that carry the oil to the lifting cylinders in order to measure the pressures involved during the variation of loads and movement. The sensor cable is connected directly to the instrument for a perfect resistance to external agents being in the absence of intermediate connectors. Its degree of protection ensures operation at the most extreme temperatures and environmental conditions. The characteristics of its cable and its protection have been chosen for the work environment where substances derived from oil or salt will not damage them.



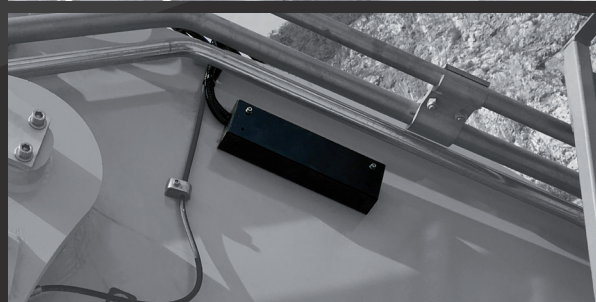
MACHINE INCLINATION SENSOR

The Alpha3 sensor measures the inclination of the machine with respect to the earth's axis, allowing a weight correction during the loading phase. Alpha3 works with Canbus technology, this means that the wiring to the instrument is reduced and simplified, it also makes it possible to diagnose Alpha3 directly from the instrument. Its degree of protection ensures operation at the most extreme temperatures and environmental conditions. A strong metallic protection ensures Alpha3 and its connectors a prolonged durability to external impacts.



BOOM ANGLE SENSOR

The Alpha3 sensor measures the angle of inclination of the arm during lifting by establishing the best position to display the weight based on the depth of the excavation. Alpha3 works with Canbus technology, this means that the wiring to the instrument is reduced and simplified, it also makes it possible to diagnose Alpha3 directly from the instrument. Its degree of protection ensures operation at the most extreme temperatures and environmental conditions. A strong metallic protection ensures Alpha3 and its connectors a prolonged durability to external impacts.



STICK ANGLE SENSOR

The Alpha3 sensor measures the angle of inclination of the stick during the outreach by correcting the weight in the position in which it is found during the boom lifting. Alpha3 works with Canbus technology, this means that the wiring to the instrument is reduced and simplified, it also makes it possible to diagnose Alpha3 directly from the instrument. Its degree of protection ensures operation at the most extreme temperatures and environmental conditions. A strong metallic protection ensures Alpha3 and its connectors a prolonged durability to external impacts.



BUCKET ANGLE SENSOR

The Alpha3 sensor measures the angle of inclination of the bucket correcting the weight in the position in which it is found during the boom lifting. Alpha3 works with Canbus technology, this means that the wiring to the instrument is reduced and simplified, it also makes it possible to diagnose Alpha3 directly from the instrument. Its degree of protection ensures operation at the most extreme temperatures and environmental conditions. A strong metallic protection ensures Alpha3 and its connectors a prolonged durability to external impacts.



specifications

power supply	9÷36Vdc
working temperature	-40÷+80°C
shocks	40G
device/sensors protection	IP54/IP67
size	140x204x67
display	HD color
maximum capacity (kg)	
measurement error	2%
legal for trade	no



data management

production monitoring (products)	300
recipes/blending management	
multi-tasking (simultaneous loads)	25
loadout full data management	large
job orders reception	yes
cloud connection	USB-wireless
loading file download (.csv)	yes



*see products datasheet for complete details