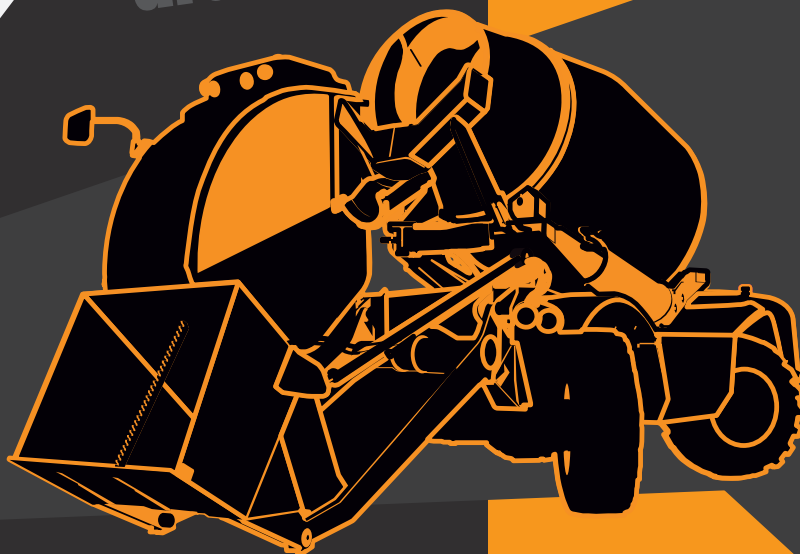


# concrete mixer drum weighing



appsheet



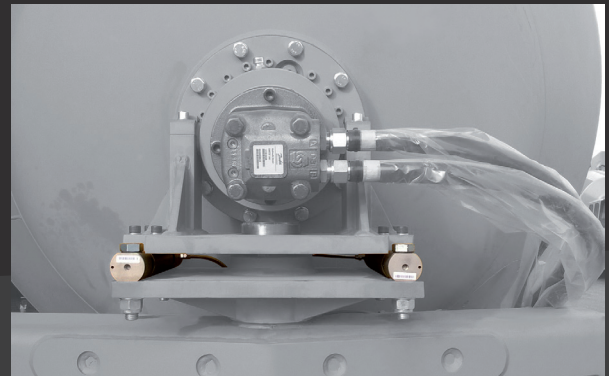
## WEIGHING AND RECIPES MANAGEMENT DEVICE INSTALLED ON BOARD

The Device is perfectly positioned in the cabin to give you the best view of its display and operability in choosing the recipe and its particular configuration. Its swivel mount allows you to direct the Device as you wish.



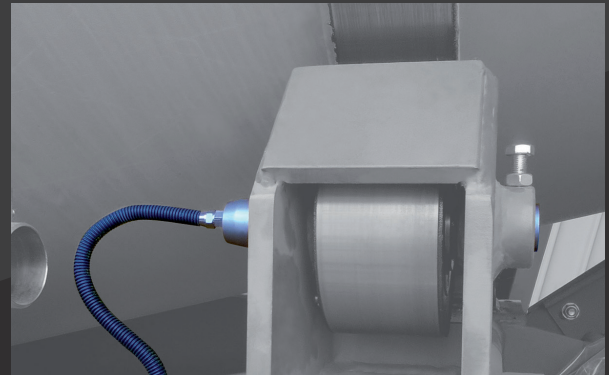
## LOAD CELL INSTALLED IN THE REAR OF THE DRUM

This appropriately installed load cell when assembling the machine makes it possible to detect the weight in the rear part of the drum, even if in rotation. The load cells have been designed to withstand a very high breaking load ensuring the robustness of their use.



## LOADPIN INSTALLED IN THE FRONT OF THE DRUM

This loadpin, appropriately installed in the assembly phase inside the pulleys on which the drum turns, makes it possible to detect the weight in the front part even if the drum is rotating. The loadpin have been designed to withstand a very high breaking load ensuring the robustness of their use.



### specifications



power supply	9÷36Vdc
working temperature	-40÷+80°C
shocks	40G
device/sensors protection	IP54/IP67
size	140x204x67
display	HD color
maximum capacity (kg)	
measurement error	1%
legal for trade	no

### data management



production monitoring (products)	300
recipes/products management	150/15
recipe full data management	yes
multi-tasking (simultaneous loads)	no
recipe orders reception	yes
cloud connection	USB-wireless
loading file download (.csv)	yes